

XTEND



INNOVATION

ETA
ETAG n° 032

*) XTEND expansion joints are manufactured according to the ETAG 032 standards

Metal services with Triple A

DEVELOPMENT

Aigner Albrecht is an innovative, Austrian service provider for plant engineering. The company is a specialized manufacturer of load-handling attachments in steel, wood and concrete, supplying industrial enterprises, public infrastructure projects and machine tool producers. Reference projects in civil engineering, international architecture and infrastructure projects, as well as in heavy, structural steel all stand as impressive testament to Aigner Albrecht's modern design excellence, manufacturing technology, reliability and proven expertise.

Located in Upper Austria on the A1 and A8 motorway, the company's extensive networks allow it to respond competitively to dynamic market behaviour with development expertise and specialised manufacturing. Expansion joints in accordance with ETAG 032 – renovation / new construction / service

Aigner Albrecht entered the market as a service and repair service provider for the old-fashioned expansion joints. While renovating one of the busiest transit highways in Europe, the need for innovation in the design and production of expansion joints became clear, particularly for small to medium-sized expansion joints and expansion widths.



Aigner Albrecht responded with quick, precise solutions, offering friendly, efficient service to road operators – creating a system of virtually maintenance-free roadway expansion joints:

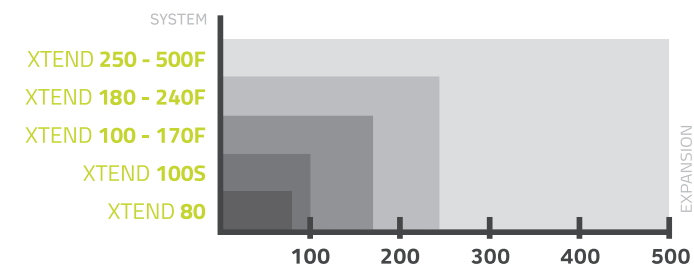




The XTEND product line includes multi-way system solutions for different widths of expansion joints. Already during the development of the system, the focus of the engineers was to build a sustainable construction

- ▶ minimal maintenance for all system components
- ▶ minimal invasive replacement in case of repairs
- ▶ Production according EN1090-2 Execution Class EXC3
- ▶ Construction following European approval directive ETAG032 approval by international road operators
- ▶ Positive Endurance testing at certified test centres

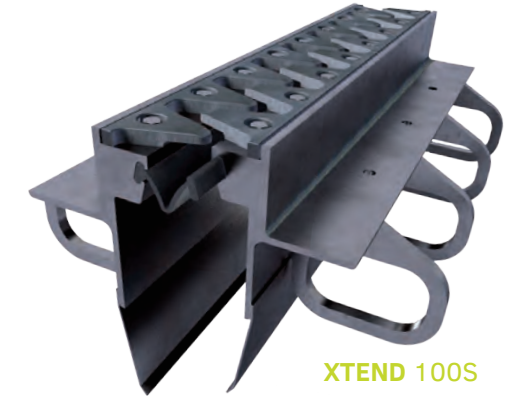
XTEND expansion joints are available as single profile construction with or without noise protection plates up to 100mm expansion movement, or as finger expansion joint for up to 500mm movement and above.



The product range includes both structures for newly-designed bridges, as well as for the replacement of existing expansion joints for bridges on highways, expressways, road ramps and other applications such as parking garages.



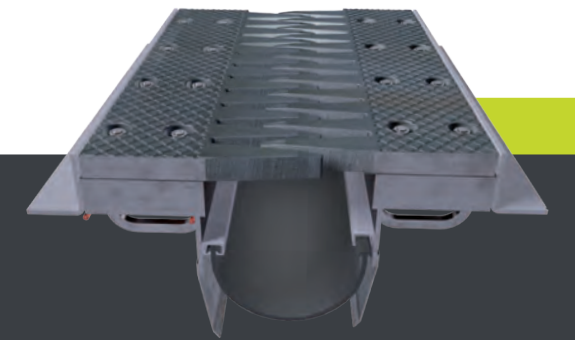
XTEND 80



XTEND 100S



XTEND 100 - 500F



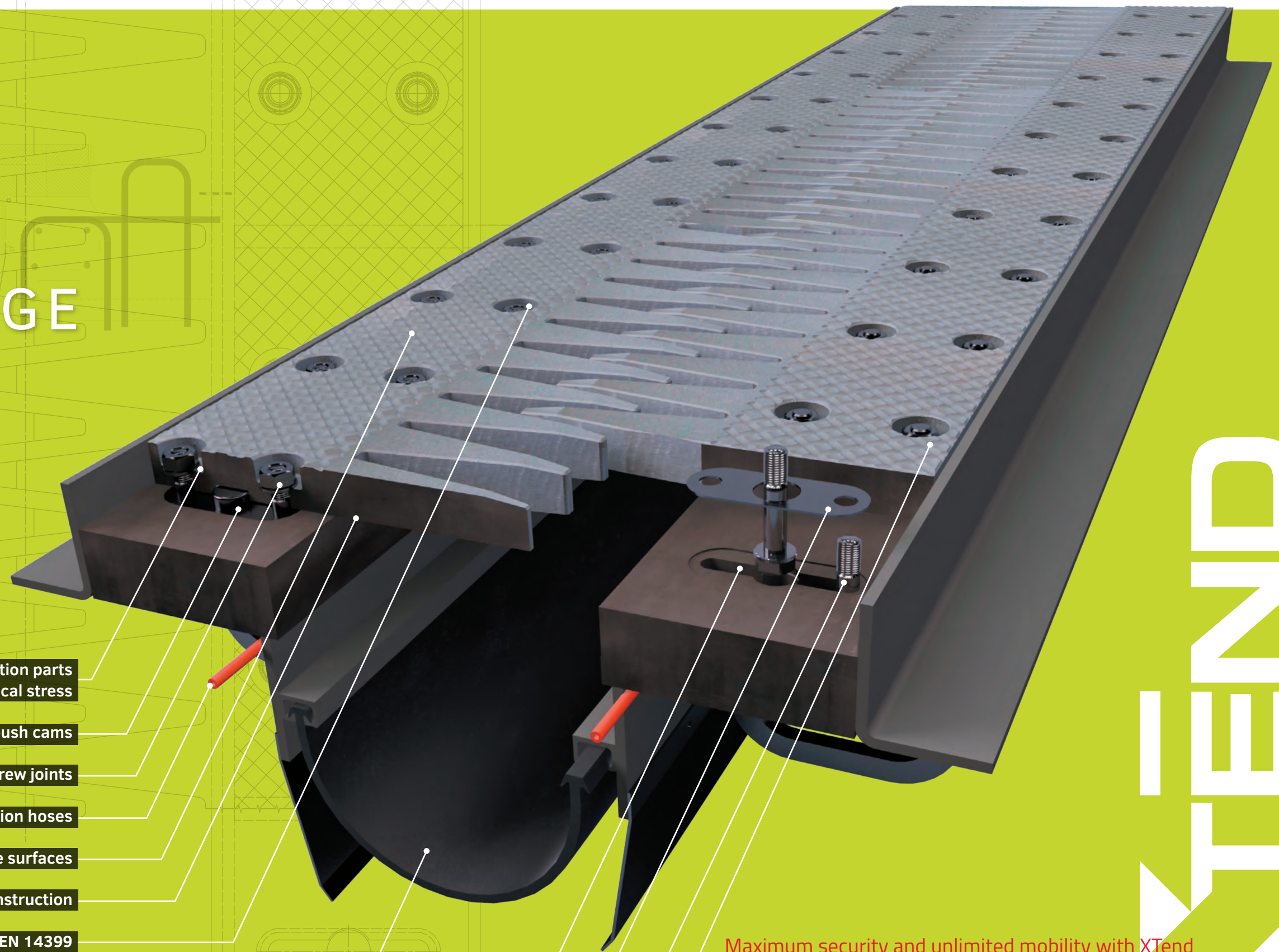
Through a unique design based on a central carrier profile system XTEND stands out with fewer parts, durable weld seams and optimal load transmission by precise, machined surfaces.

The design optimized indentation of cantilevered finger plates reduces noise and provides enhanced driving dynamics for comfortable, durable operation.

Whether existing road expansion joints or a planned new construction – we are your expert partner from Austria!



MAIN ADVANTAGE



XTEND

- Constructive radii for construction parts with critical stress
- Horizontal force absorption thanks to push cams
- Recessed screw joints
- Integrated injection hoses
- Anti-slip profile surfaces
- Drip edge profile for collar finger construction
- Screw joints in accordance with EN 14399
- Easy to replace drain channel
- Patented long hole system
- Recessed seals
- No thread in substructure
- Easy to replace in case of damage

Maximum security and unlimited mobility with XTend

COST-EFFECTIVE BY ENGINEERING

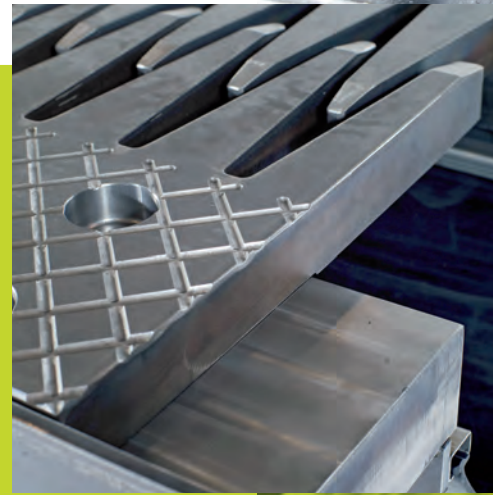
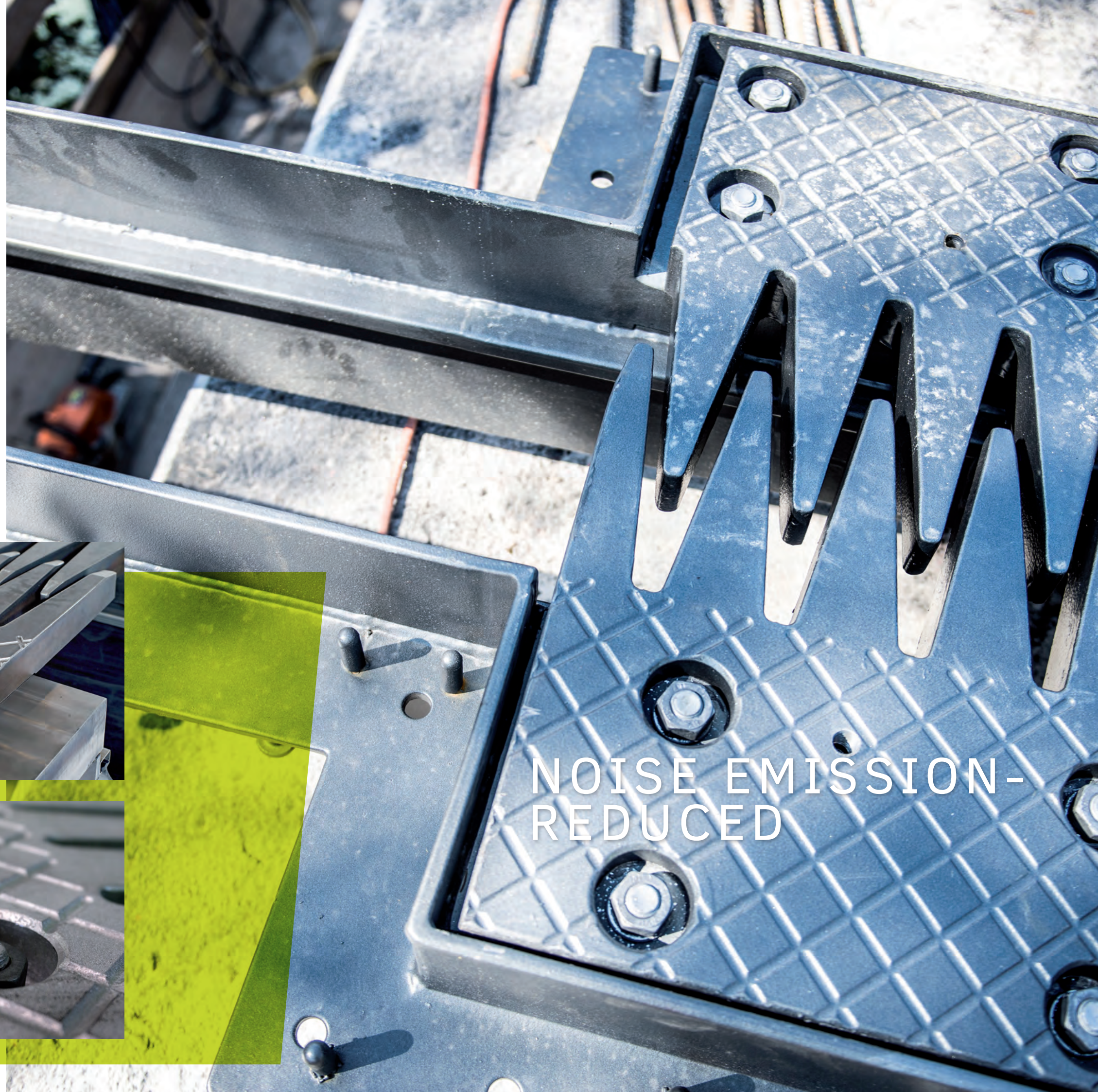
- ▶ Lowest Life-Cycle-Costs due to a durable product consistency with easy changeable screw connections

OPTIMUM AVAILABILITY OF THE ROAD

- ▶ Lowest opportunity costs in case of road barriers

SPECIFICATIONS

- Non-slip, profiled surfaces
- Recessed fitting and seals (small notch effect)
- Horizontal force absorption by push cams
- Constructive radii for stress critical components
- Patented slot system machined into the substructure
- Drip edge at finger plates
- Integrated injection hoses to balance the concrete shrinkage during installation
- Heavy-duty drainage channel



NOISE EMISSION-
REDUCED



SUSTAINABLE
RELIABLE

ASSEMBLY

- Standardised, twin-row, slip-resistant screw fixture, conforming to EN 14399
- Massive base with machined contact surfaces, without threads
- Easily-replaceable drainage channel (no roadworks)

USAGE

- For heaviest traffic and maximum load
- Easy rectification of defects in the event of damage
- Simply, rapid exchange of nuts and bolts helps minimize road blocks





European Technical Assessment

ETA-18/0634
of 22.12.2018

General part

Technical Assessment Body issuing the European Technical Assessment Austrian Institute of Construction Engineering (OIB)

Trade name of the construction product XTEND 80/100EU

Product family to which the construction product belongs Noising expansion joints for road bridges

Manufacturer Aigner Albrecht Anlagenbau GmbH
Inn 25
4632 Pichl bei Wels
Austria

Manufacturing plant(s) Aigner Albrecht Anlagenbau GmbH
Inn 25
4632 Pichl bei Wels
Austria

This European Technical Assessment contains 19 pages including 4 Annexes which form an integral part of this assessment.

This European Technical Assessment is issued in accordance with Regulation (EU) No 305/2011, on the basis of Guideline for European technical approval (ETAG) No 032 "Expansion joints for road bridges Part 4: Noising expansion joints", edition May 2013, used as European Assessment Document (EAD)



European Technical Assessment

ETA-17/0850
of 23.04.2018

General part

Technical Assessment Body issuing the European Technical Assessment Austrian Institute of Construction Engineering (OIB)

Trade name of the construction product XTEND 100S

Product family to which the construction product belongs Noising expansion joints for road bridges

Manufacturer Aigner Albrecht Anlagenbau GmbH
Inn 25
4632 Pichl bei Wels
Austria

Manufacturing plant(s) Aigner Albrecht Anlagenbau GmbH
Inn 25
4632 Pichl bei Wels
Austria

This European Technical Assessment contains 23 pages including 5 Annexes which form an integral part of this assessment.

This European Technical Assessment is issued in accordance with Regulation (EU) No 305/2011, on the basis of Guideline for European technical approval (ETAG) No 032 "Expansion joints for road bridges Part 4: Noising expansion joints", edition May 2013, used as European Assessment Document (EAD)

This European Technical Assessment replaces European Technical Assessment ETA-17/0850 of 30.11.2017



ZULASSUNG

GZ: BMVIT-327.120/0007-IV/IVS/2017

Zulassungsgegenstand: Übergangskonstruktion
Fingerkonstruktion Typ XTEND 100F bis XTEND 300F
gemäß RVS 15.04.51:2010 und
geräuscharm gemäß RVS 15.04.52:2011

Zulassungswerber: Aigner Albrecht Anlagenbau GmbH
Gewerkepark OST 5
4621 Sipbachzell / Österreich

Hersteller: Aigner Albrecht Anlagenbau GmbH
Gewerkepark OST 5
4621 Sipbachzell / Österreich

Geltungsbereich: Republik Österreich,
Bundesstraßen

Geltungsdauer: ab sofort bis auf Widerruf,
Bedingung: jährliche Vorlage der Fremdüberwachung,
längstens jedoch bis 04.10.2022

Fremdüberwachung: BCT Bahn Consult TEN Bewertungsges.m.b.H

Hinweis: Der Zulassungswerber verpflichtet sich, die zustehende Stelle, die ist das Bundesministerium für Verkehr, Innovation und Technologie, Abteilung IV/IVS/2, von wesentlichen Änderungen, insbesondere vom Auslaufen von Überwachungsverträgen oder von konstruktiven Änderungen des Zulassungsgegenstandes, unverzüglich in Kenntnis zu setzen.

Wien, am 04.10.2017
Für den Bundesminister:
Dipl.-Ing. Dr. Johann HORVATITS

Please contact us for more information about our innovative products

„Aigner Albrecht capably handles each of our requirements. Over the years, both their technical competence and the high quality of their expansion joints have strengthened an excellent business relationship. „

Bert Hacksteen
HARTMAN, NL

„Aigner Albrecht produced XTEND expansion joints for us, exactly to our specifications. The high quality of the products and their compliance with delivery deadlines are important pillars of our collaboration.“

Michael Hartmann
HEBAG, CH

STANDARD

The logo features a stylized 'X' in yellow and green, followed by the word 'TEND' in white. A small red horizontal bar is positioned above the 'D'.

▶ XTEND

